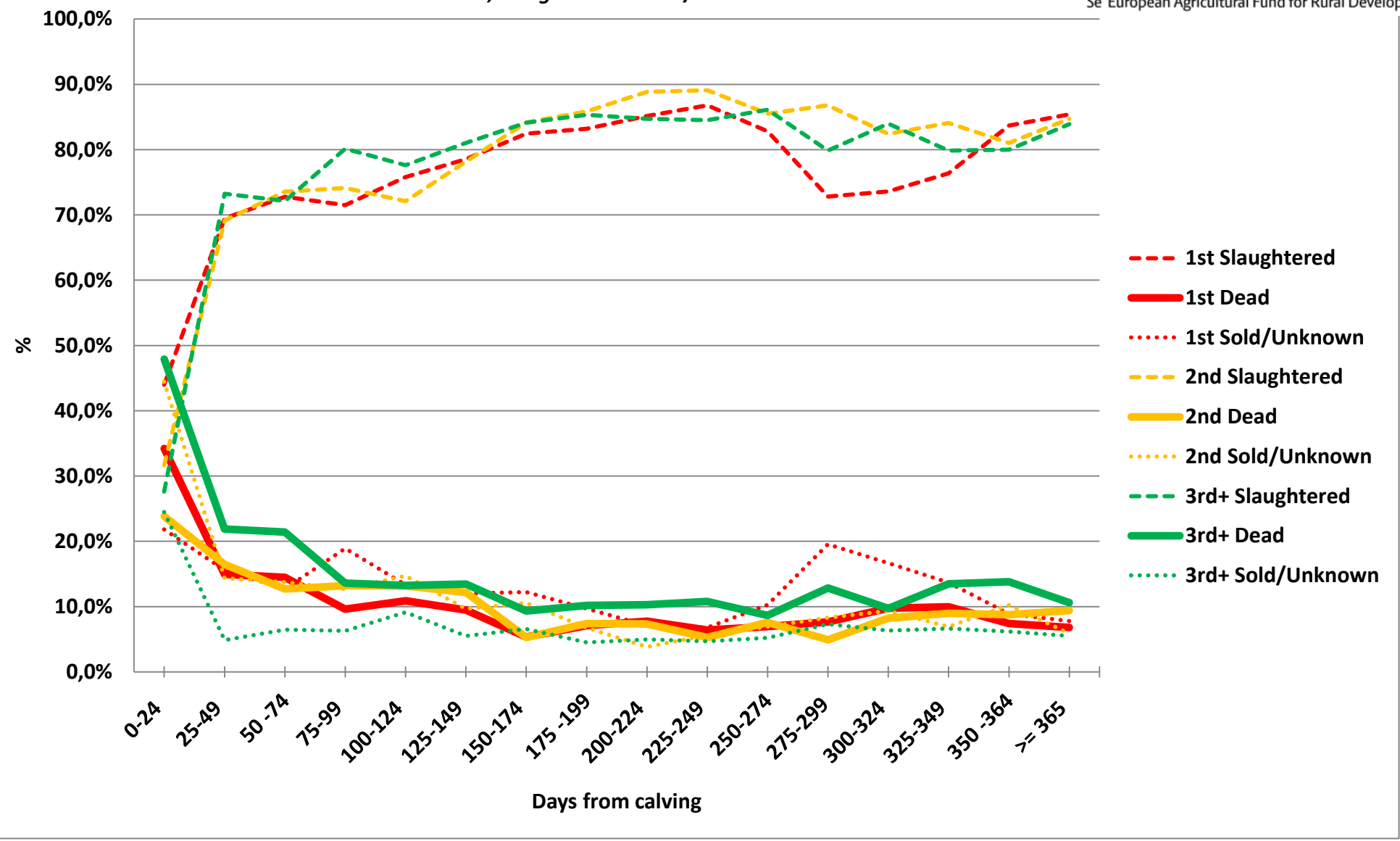
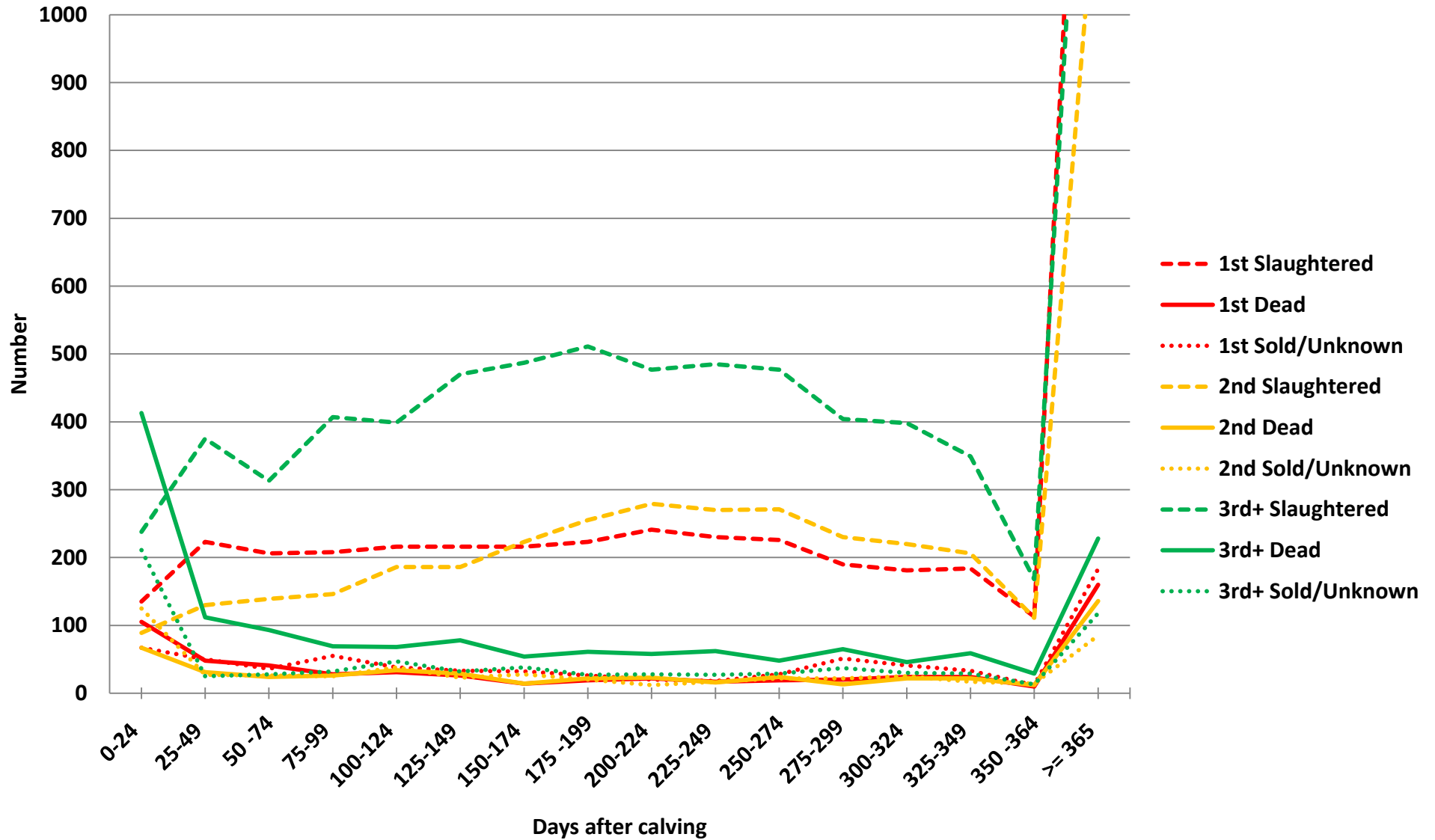


### JER: Distribution of cows disposed in 2012 depending of stage of lactation *Dead, slaughtered or sold/unknow*



# JER: Number of cows disposed in 2012 depending of stage of lactation

*Dead, slaughtered or sold/unknown*



Day	1st		2nd		3rd and later		Numbers			1st		2nd		3rd and later								
	laughtered	1st Dead /Unknown	laughtered	2nd Dead /Unknown	laughtered	3rd+ Dead /Unknown	1st	2nd	3rd+	Day	laughtered	1st Dead /Unknown	laughtered	2nd Dead /Unknown	laughtered	3rd+ Dead /Unknown						
0-24	44,0%	34,2%	21,8%	31,7%	23,8%	44,5%	27,6%	47,9%	24,5%	307	281	862	0-24	135	105	67	89	67	125	238	413	211
25-49	69,5%	15,0%	15,6%	69,1%	16,5%	14,4%	73,2%	21,9%	4,9%	321	188	512	25-49	223	48	50	130	31	27	375	112	25
50 -74	72,8%	14,5%	12,7%	73,5%	12,7%	13,8%	72,1%	21,4%	6,5%	283	189	434	50 -74	206	41	36	139	24	26	313	93	28
75-99	71,5%	9,6%	18,9%	74,1%	13,2%	12,7%	80,1%	13,6%	6,3%	291	197	508	75-99	208	28	55	146	26	25	407	69	32
100-124	75,8%	10,9%	13,3%	72,1%	13,2%	14,7%	77,6%	13,2%	9,1%	285	258	514	100-124	216	31	38	186	34	38	399	68	47
125-149	78,5%	9,5%	12,0%	78,2%	12,2%	9,7%	81,0%	13,4%	5,5%	275	238	580	125-149	216	26	33	186	29	23	470	78	32
150-174	82,4%	5,3%	12,2%	84,2%	5,3%	10,6%	84,1%	9,3%	6,6%	262	265	579	150-174	216	14	32	223	14	28	487	54	38
175 -199	83,2%	7,1%	9,7%	85,9%	7,4%	6,7%	85,3%	10,2%	4,5%	268	297	599	175 -199	223	19	26	255	22	20	511	61	27
200-224	85,2%	7,8%	7,1%	88,9%	7,3%	3,8%	84,7%	10,3%	5,0%	283	314	563	200-224	241	22	20	279	23	12	477	58	28
225-249	86,8%	6,4%	6,8%	89,1%	5,3%	5,6%	84,5%	10,8%	4,7%	265	303	574	225-249	230	17	18	270	16	17	485	62	27
250-274	82,8%	7,0%	10,3%	85,5%	7,6%	6,9%	86,1%	8,7%	5,2%	273	317	554	250-274	226	19	28	271	24	22	477	48	29
275-299	72,8%	7,7%	19,5%	86,8%	4,9%	8,3%	79,8%	12,8%	7,3%	261	265	506	275-299	190	20	51	230	13	22	404	65	37
300-324	73,6%	9,8%	16,7%	82,4%	8,2%	9,4%	84,0%	9,7%	6,3%	246	267	474	300-324	181	24	41	220	22	25	398	46	30
325-349	76,3%	10,0%	13,7%	84,1%	9,0%	6,9%	79,9%	13,5%	6,6%	241	245	437	325-349	184	24	33	206	22	17	349	59	29
350 -364	83,7%	7,4%	8,9%	81,0%	8,8%	10,2%	80,0%	13,8%	6,2%	135	137	210	350 -364	113	10	12	111	12	14	168	29	13
>= 365	85,4%	6,8%	7,8%	84,7%	9,4%	5,9%	83,9%	10,6%	5,5%	2349	1447	2149	>= 365	2006	160	183	1226	136	85	1803	228	118